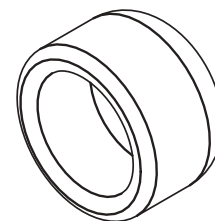
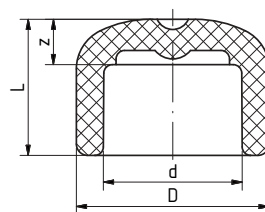


TAPPO SALDATURA A TASCA

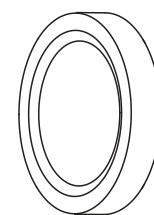
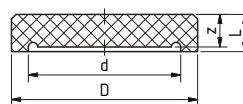
Sistema: aquatherm green pipe,
aquatherm blue pipe
Materiale: Fusiolen® PP-R
Standard: DIN 16962, DIN EN ISO 15874
Colore: verde



SDR	Art.-Nr.	d [mm]	D [mm]	z [mm]	L [mm]	Peso [kg]	Sistema	Confezione	GP	Prezzo €/pz
<i>saldatura a tasca</i>										
6 7,4 9 11	0014106	16	26,0	13,5	26,5	0,008	•	10	A	0,70
	0014108	20	29,5	9,5	24,0	0,009	• •	10	A	0,76
	0014110	25	34,0	8,0	24,0	0,011	• •	10	A	0,97
	0014112	32	43,0	11,0	29,0	0,023	• •	5	A	1,39
	0014114	40	52,0	17,5	38,0	0,042	• •	5	A	2,35
	0014116	50	68,0	21,0	44,5	0,082	• •	5	A	3,24
	0014118	63	84,0	24,5	52,0	0,146	• •	1	A	6,34
	0014120	75	100,0	28,5	58,5	0,243	• •	1	A	9,59
	0014122	90	120,0	34,5	67,5	0,365	• •	1	A	17,75
	0014124	110	147,0	28,0	65,0	0,635	• •	1	A	28,43
	0014126	125	167,0	42,0	82,0	0,872	• •	1	A	32,93

TAPPO SALDATURA DI TESTA

Sistema: aquatherm green pipe,
aquatherm blue pipe
Materiale: Fusiolen® PP-RCT
Standard: DIN 16962, DIN EN ISO 15874
Colore: verde



SDR	Art.-Nr.	D [mm]	L [mm]	z [mm]	d [mm]	Peso [kg]	Sistema	Confezione	GP	Prezzo €/pz
9	0314130	160	70,0	17,9	124,2	0,847	•	1	B	53,71
	0314134	200	80,0	22,4	155,2	1,373	•	1	B	69,37
	0314138	250	90,0	27,9	194,2	2,856	•	1	B	104,06
	0314142	315	70,0	52,5	244,6	5,080	•	1	B	652,00
	0314144	355	80,0	66,5	275,6	7,050	•	1	B	825,89
11	0014131	160	70,0	14,6	130,8	0,759	• •	1	B	46,62
	0014135	200	80,0	18,2	163,6	1,070	• •	1	B	61,92
	0014139	250	90,0	22,7	204,6	1,989	• •	1	B	90,89
	0014143	315	70,0	52,5	257,8	4,200	• •	1	B	331,18
	0014145	355	80,0	67,5	290,6	6,410	• •	1	B	431,84
	0014147	400	70,0	60,0	327,4	7,190	• •	1	B	924,00
	0014149	450	80,0	70,0	368,2	10,500	• •	1	B	1.197,39
17,6	2514130	160	70,0	9,1	141,8	0,679	•	1	B	24,38
	2514134	200	80,0	11,4	177,2	0,925	•	1	B	36,12
	2514138	250	90,0	14,2	221,6	2,109	•	1	B	57,10
	2514142	315	70,0	60,0	279,2	4,500	•	1	B	297,34
	2514144	355	70,0	60,0	314,8	5,540	•	1	B	415,75
	2514146	400	75,0	65,0	354,6	6,000	•	1	B	831,10
	2514148	450	70,0	56,0	399,0	8,520	•	1	B	1.064,41
	2514150	500	75,0	62,0	443,2	12,500	•	1	B	1.390,59
	2514154	630	90,0	78,0	558,6	23,500	•	1	B	2.365,15