

T RIDOTTO SALDATURA A TASCA

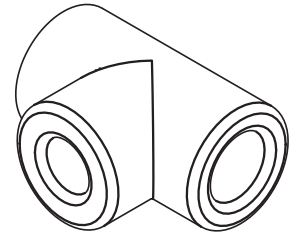
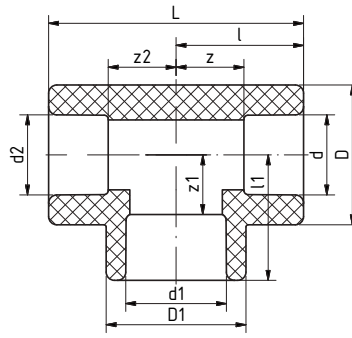
Sistema: aquatherm green pipe,
aquatherm blue pipe

Materiale: Fusiolen® PP-R

Standard: DIN 16962, DIN EN ISO 15874

Colore: verde

Forma: stampato ad iniezione



SDR	Art.-Nr.	d [mm]	d1 [mm]	d2 [mm]	L [mm]	l [mm]	l1 [mm]	z [mm]	z1 [mm]	z2 [mm]	D [mm]	D1 [mm]	Peso [kg]	Sistema	Con- fezi- one	GP	Prezzo €/pz	
<i>saldatura a tasca</i>																		
	0013506	20	16	16	51,0	25,5	25,3	11,0	12,3	12,5	29,5	29,5	0,025	•	10	A	1,14	
	0013508	20	16	20	51,0	25,5	25,3	11,0	12,3	11,0	29,5	29,5	0,024	•	10	A	1,14	
	0013510	20	20	16	51,0	25,5	25,3	11,0	10,8	12,5	29,5	29,5	0,023	•	10	A	1,14	
	0013511	20	25	20	62,0	31,0	30,5	16,5	14,5	16,5	34,0	34,0	0,040	•	•	10	A	1,57
	0013512	25	16	16	62,0	31,0	30,5	15,0	17,5	18,0	34,0	34,0	0,043	•	•	10	A	1,57
	0013514	25	16	20	62,0	31,0	30,5	15,0	17,5	16,5	34,0	34,0	0,041	•	•	10	A	1,57
	0013516	25	16	25	62,0	31,0	30,5	15,0	17,5	15,0	34,0	34,0	0,038	•	•	10	A	1,57
	0013520	25	20	20	62,0	31,0	30,5	15,0	16,0	16,5	34,0	34,0	0,039	•	•	10	A	1,57
	0013522	25	20	25	62,0	31,0	30,5	15,0	16,0	15,0	34,0	34,0	0,036	•	•	10	A	1,57
	0013528	32	16	32	70,0	35,0	31,0	17,0	18,0	17,0	43,0	29,5	0,053	•	•	5	A	2,34
	0013532	32	20	20	73,5	36,8	37,0	18,8	22,5	22,3	43,0	43,0	0,076	•	•	5	A	2,34
	0013534	32	20	32	70,0	35,0	31,0	17,0	16,5	17,0	43,0	29,5	0,053	•	•	5	A	2,34
	0013538	32	25	25	70,0	35,0	34,5	17,0	18,5	19,0	43,0	43,0	0,069	•	•	5	A	2,34
	0013540	32	25	32	70,0	35,0	32,0	17,0	16,0	17,0	43,0	34,0	0,050	•	•	5	A	2,34
	0013542	40	20	40	83,0	41,5	36,0	21,0	21,5	21,0	52,0	34,0	0,091	•	•	5	A	3,29
	0013544	40	25	40	83,0	41,5	36,0	21,0	20,0	21,0	52,0	34,0	0,089	•	•	5	A	3,29
	0013546	40	32	40	84,0	42,0	40,5	21,5	22,5	21,5	52,0	52,0	0,092	•	•	5	A	3,29
	0013547	50	20	50	99,0	49,5	40,5	26,0	26,0	26,0	68,0	29,5	0,162	•	•	5	A	7,73
	0013548	50	25	50	99,0	49,5	44,5	26,0	28,5	26,0	68,0	34,0	0,158	•	•	5	A	7,73
	0013550	50	32	50	99,0	49,5	44,5	26,0	26,5	26,0	68,0	43,0	0,160	•	•	5	A	7,73
	0013551	50	40	50	99,0	49,5	49,5	26,0	29,0	26,0	68,0	68,0	0,161	•	•	5	A	7,73
6	0013552	63	20	63	120,0	60,0	48,5	32,5	34,0	32,5	84,0	34,0	0,335	•	•	1	A	11,94
7,4	0013554	63	25	63	120,0	60,0	48,5	32,5	32,5	32,5	84,0	34,0	0,331	•	•	1	A	11,94
9	0013556	63	32	63	120,0	60,0	53,0	32,5	35,5	32,5	84,0	52,0	0,340	•	•	1	A	11,94
11	0013558	63	40	63	120,0	60,0	53,0	32,5	33,0	32,5	84,0	52,0	0,332	•	•	1	A	11,94
17,6	0013560	63	50	63	120,0	60,0	56,0	32,5	36,5	32,5	84,0	68,0	0,398	•	•	1	A	11,94
	0013561	75	20	75	137,0	68,5	54,5	38,5	40,0	38,5	100,0	34,0	0,501	•	•	1	A	15,27
	0013562	75	25	75	137,0	68,5	54,5	38,5	38,5	38,5	100,0	34,0	0,497	•	•	1	A	15,27
	0013564	75	32	75	137,0	68,5	59,0	38,5	41,0	38,5	100,0	52,0	0,505	•	•	1	A	15,27
	0013566	75	40	75	137,0	68,5	59,0	38,5	38,5	38,5	100,0	52,0	0,497	•	•	1	A	15,27
	0013568	75	50	75	137,0	68,5	66,0	38,5	42,5	38,5	100,0	84,0	0,550	•	•	1	A	15,27
	0013570	75	63	75	137,0	68,5	66,0	38,5	38,5	38,5	100,0	84,0	0,515	•	•	1	A	15,27
	0013576	90	32	90	158,0	79,0	64,0	46,0	46,0	46,0	120,0	43,0	0,880	•	•	1	A	34,27
	0013578	90	40	90	158,0	79,0	66,5	46,0	46,0	46,0	120,0	52,0	0,862	•	•	1	A	34,27
	0013580	90	50	90	158,0	79,0	69,5	46,0	46,0	46,0	120,0	68,0	0,905	•	•	1	A	34,27
	0013582	90	63	90	158,0	79,0	73,5	46,0	46,0	46,0	120,0	84,0	0,876	•	•	1	A	34,27
	0013584	90	75	90	158,0	79,0	76,0	46,0	46,0	46,0	120,0	100	0,991	•	•	1	A	34,27
	0013586	110	63	110	186,0	93,0	83,5	56,0	56,0	56,0	147,0	84,0	1,534	•	•	1	A	57,29
	0013588	110	75	110	186,0	93,0	86,0	56,0	56,0	56,0	147,0	100,0	1,517	•	•	1	A	57,29
	0013590	110	90	110	186,0	93,0	89,0	56,0	56,0	56,0	147,0	120,0	1,548	•	•	1	A	57,29
	0013592	125	75	125	233,0	116,5	106,5	76,5	76,5	76,5	167,0	100,0	2,427	•	•	1	A	116,86
	0013594	125	90	125	233,0	116,5	109,5	76,5	76,5	76,5	167,0	120,0	2,509	•	•	1	A	125,54
	0013596	125	110	125	233,0	116,5	113,5	76,5	76,5	76,5	167,0	147,0	2,563	•	•	1	A	125,54